

\$859,900 - 349 Copperhead Way Se, Calgary

MLS® #A2198842

\$859,900

4 Bedroom, 4.00 Bathroom, 2,673 sqft
Residential on 0.09 Acres

Copperfield, Calgary, Alberta

The Canmore: Luxury Estate Living in
Copperstone

Discover unparalleled elegance with The Canmore, a premier luxury estate home nestled within Vesta Properties' master-planned Copperstone community in southeast Calgary.

Key Features:

Spacious Layout: Boasting 2,665 sq. ft. of meticulously designed living space, The Canmore offers four generously sized bedrooms, three modern bathrooms, a versatile main floor office, and a functional mudroom.

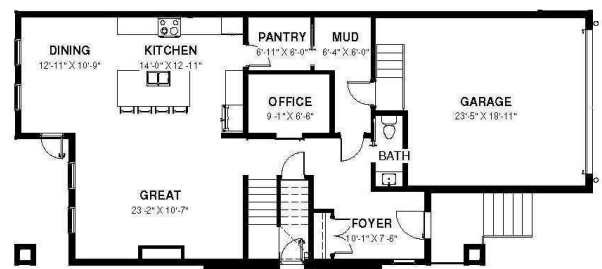
Customizable Interiors: Tailor your home with a variety of options, including vaulted ceilings, personalized cabinetry, and diverse lighting arrangements, ensuring a unique touch to your living space.

Gourmet Kitchen: Experience culinary excellence with a gourmet kitchen featuring stainless steel appliances, quartz countertops, and ample storage, perfect for both everyday meals and entertaining guests.

Legal Income Suite Potential: The expansive 1,117 sq. ft. unfinished basement provides an excellent opportunity to develop a legal income suite, offering potential rental income or additional living space for extended family.



FARMHOUSE



MAIN 1,119 SQ.FT. GARAGE 451 SQ. FT.



SECOND 1,546 SQ.FT.

Premium Lot Selection: Situated on large, traditional walk-out lots ranging from 36 to 38 feet wide, each home backs onto serene green spaces, providing a tranquil and private outdoor environment.

Community Highlights:

Established Amenities: Copperstone is part of the well-established Copperfield community, offering residents access to schools, parks, walking trails, shopping centers, dining options, and convenient transit connections.

Strategic Location: Enjoy seamless connectivity with quick access to major routes like Stoney Trail, enhancing your commute and travel experiences.

Embrace luxury, functionality, and investment potential with The Canmore at Copperstone. For more information or to schedule a viewing, contact Vesta Properties today.

Note: Features and availability are subject to change. Please contact Vesta Properties for the most current information.

Built in 2025

Essential Information

| | |
|----------------|-------------|
| MLS® # | A2198842 |
| Price | \$859,900 |
| Bedrooms | 4 |
| Bathrooms | 4.00 |
| Full Baths | 3 |
| Half Baths | 1 |
| Square Footage | 2,673 |
| Acres | 0.09 |
| Year Built | 2025 |
| Type | Residential |
| Sub-Type | Detached |

| | |
|--------|----------|
| Style | 2 Storey |
| Status | Active |

Community Information

| | |
|-------------|-----------------------|
| Address | 349 Copperhead Way Se |
| Subdivision | Copperfield |
| City | Calgary |
| County | Calgary |
| Province | Alberta |
| Postal Code | T2Z 5H2 |

Amenities

| | |
|----------------|------------------------|
| Parking Spaces | 4 |
| Parking | Double Garage Attached |
| # of Garages | 2 |

Interior

| | |
|-------------------|--|
| Interior Features | See Remarks |
| Appliances | Dishwasher, Electric Stove, Refrigerator |
| Heating | Forced Air |
| Cooling | None |
| Fireplace | Yes |
| # of Fireplaces | 1 |
| Fireplaces | Gas |
| Has Basement | Yes |
| Basement | Full, Unfinished |

Exterior

| | |
|-------------------|--------------------------|
| Exterior Features | None |
| Lot Description | See Remarks |
| Roof | Asphalt Shingle |
| Construction | Vinyl Siding, Wood Frame |
| Foundation | Poured Concrete |

Additional Information

| | |
|----------------|-----------------|
| Date Listed | March 4th, 2025 |
| Days on Market | 29 |
| Zoning | R-G |

Listing Details

Listing Office Real Estate Professionals Inc.

Data is supplied by Pillar 9â„¸ MLSÂ® System. Pillar 9â„¸ is the owner of the copyright in its MLSÂ® System. Data is deemed reliable but is not guaranteed accurate by Pillar 9â„¸. The trademarks MLSÂ®, Multiple Listing ServiceÂ® and the associated logos are owned by The Canadian Real Estate Association (CREA) and identify the quality of services provided by real estate professionals who are members of CREA. Used under license.