

\$1,049,900 - 1396 Shawnee Road Sw, Calgary

MLS® #A2195460

\$1,049,900

4 Bedroom, 4.00 Bathroom, 2,443 sqft
Residential on 0.13 Acres

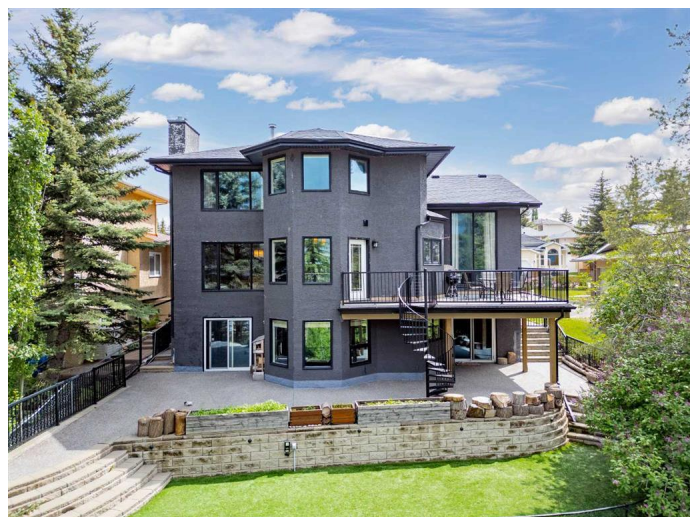
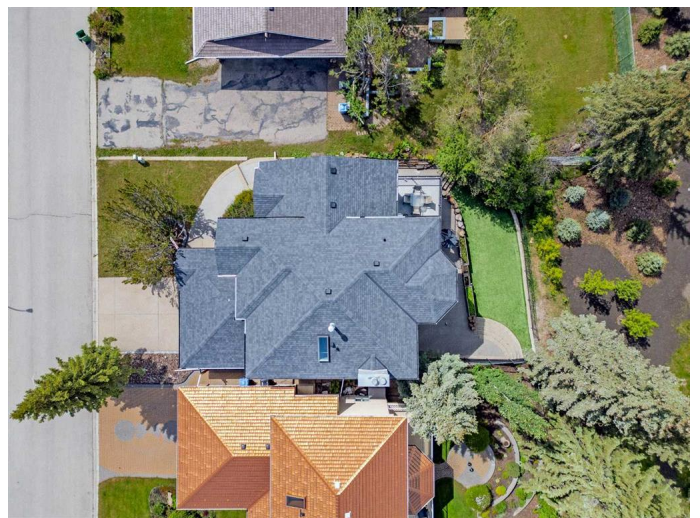
Shawnee Slopes, Calgary, Alberta

Welcome to this exquisite 4-bedroom, 3.5-bathroom, 2-storey home boasting nearly 3,500 sq. ft. of beautifully developed living space. Nestled in a quiet cul-de-sac and backing onto a serene natural green space, this home offers both privacy and convenience in a highly sought-after neighborhood.

Perfect for modern living, the open-concept layout is designed for entertaining, featuring soaring cathedral ceilings and large windows that fill the space with natural light. The family room, currently utilized as a formal dining area, seamlessly transitions into the state-of-the-art kitchen. This chef's dream is equipped with upgraded stainless steel appliances, a large central island, granite countertops, and rich mocha cabinetry. From the kitchen, step onto a massive backyard deck with multiple natural gas outlets, perfect for summer BBQs and outdoor gatherings.

A traditional living room/dining room combination makes hosting dinner parties effortless. The main floor also offers a private den—ideal for a home office—as well as a fantastic laundry/mudroom with a sink and a powder room for added convenience.

Upstairs, you'll find three generously sized bedrooms, including the luxurious master suite—an adult oasis featuring a large soaker tub, in-floor heating, double vanity, separate glass shower, and a spacious walk-in closet.



The fully finished walk-out basement is bright and inviting, featuring a large recreation room, a gaming room, and a massive fourth bedroom with sliding glass doors leading to the patio. The extensively landscaped, maintenance-free backyard includes a deck with a spiral staircase, an exposed aggregate patio, and artificial turf for effortless upkeep.

Additional highlights of this remarkable home include two updated furnaces, a newer roof, and dual AC systems for year-round comfort. With stunning curb appeal, this home is truly move-in ready for its next proud owners.

Enjoy easy access to Fish Creek Park, Macleod Trail, and Stoney Trail. Plus, youâ€™re within walking distance to numerous parks, the new outdoor skating rink, tennis courts, and close to shopping, schools, and more.

Don't miss this incredible opportunity to elevate your lifestyle in the prestigious community of Shawnee Slopes!

Built in 1989

Essential Information

MLS® #	A2195460
Price	\$1,049,900
Bedrooms	4
Bathrooms	4.00
Full Baths	3
Half Baths	1
Square Footage	2,443
Acres	0.13
Year Built	1989
Type	Residential
Sub-Type	Detached

Style 2 Storey
Status Active

Community Information

Address 1396 Shawnee Road Sw
Subdivision Shawnee Slopes
City Calgary
County Calgary
Province Alberta
Postal Code T2Y 2H1

Amenities

Parking Spaces 4
Parking Double Garage Attached, Garage Door Opener, Garage Faces Front, Side By Side
of Garages 2

Interior

Interior Features No Animal Home, No Smoking Home, Open Floorplan, Pantry, Separate Entrance, Stone Counters, Storage
Appliances Built-In Oven, Central Air Conditioner, Dishwasher, Dryer, Electric Cooktop, Garage Control(s), Garburator, Microwave, Range Hood, Refrigerator, Washer, Window Coverings
Heating Forced Air
Cooling Central Air
Fireplace Yes
of Fireplaces 1
Fireplaces Gas, Living Room
Has Basement Yes
Basement Finished, Full, Walk-Out

Exterior

Exterior Features Balcony, Garden
Lot Description Back Yard, Backs on to Park/Green Space, Few Trees, Garden, Landscaped, Low Maintenance Landscape, No Neighbours Behind, Rectangular Lot
Roof Asphalt Shingle
Construction Stucco, Wood Frame
Foundation Poured Concrete

Additional Information

Date Listed	February 18th, 2025
Days on Market	52
Zoning	R-CG

Listing Details

Listing Office	RE/MAX First
----------------	--------------

Data is supplied by Pillar 9â,,ç MLSÂ® System. Pillar 9â,,ç is the owner of the copyright in its MLSÂ® System. Data is deemed reliable but is not guaranteed accurate by Pillar 9â,,ç. The trademarks MLSÂ®, Multiple Listing ServiceÂ® and the associated logos are owned by The Canadian Real Estate Association (CREA) and identify the quality of services provided by real estate professionals who are members of CREA. Used under license.